

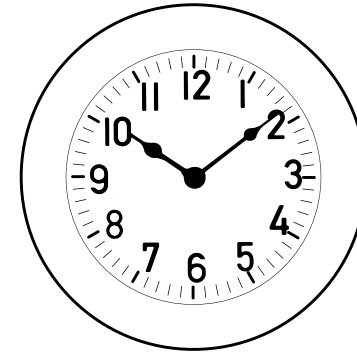
# Garden Trading®

## Tenby Clock Product Instructions

---

Please read through these instructions and ensure they are kept for future reference.  
This item can be used outdoors.

---



### Instructions for Use

1. Insert one "AA" type alkaline battery (not supplied) into the battery compartment on the rear of the clock. Ensure correct location of battery noting polarity identified in the battery compartment.
2. To set the time; rotate the time set wheel at the back of the clock to the desired setting.
3. Remove battery before storing the clock. A worn-out battery can damage your clock.

### Changing the Batteries - Batteries should be removed and replaced by adults only.

- Only use recommended batteries or those of the same or equivalent type.
- Do not mix old and new batteries or batteries of different types.
- Batteries are to be inserted with the correct polarity.
- The supply terminals are not to be short-circuited.
- Remove exhausted batteries from item.
- Remove batteries if equipment is not used for extended periods of time.
- Rechargeable batteries are to be removed from the item before being recharged.
- Rechargeable batteries are only to be charged under adult supervision.
- Do not attempt to recharge non-rechargeable batteries.
- Batteries contain substances that may be harmful to the environment and human health.

Waste electrical products should not be disposed of with household waste.  
Please recycle where facilities exist. Check with your Local Authority or retailer  
for recycling advice.

Garden Trading®

[gardentrading.co.uk](http://gardentrading.co.uk)

[customerservices@gardentrading.co.uk](mailto:customerservices@gardentrading.co.uk)

TGTC, Hargreaves Road, Groundwell Industrial Estate, Swindon, SN25 5AZ

